
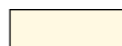

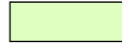
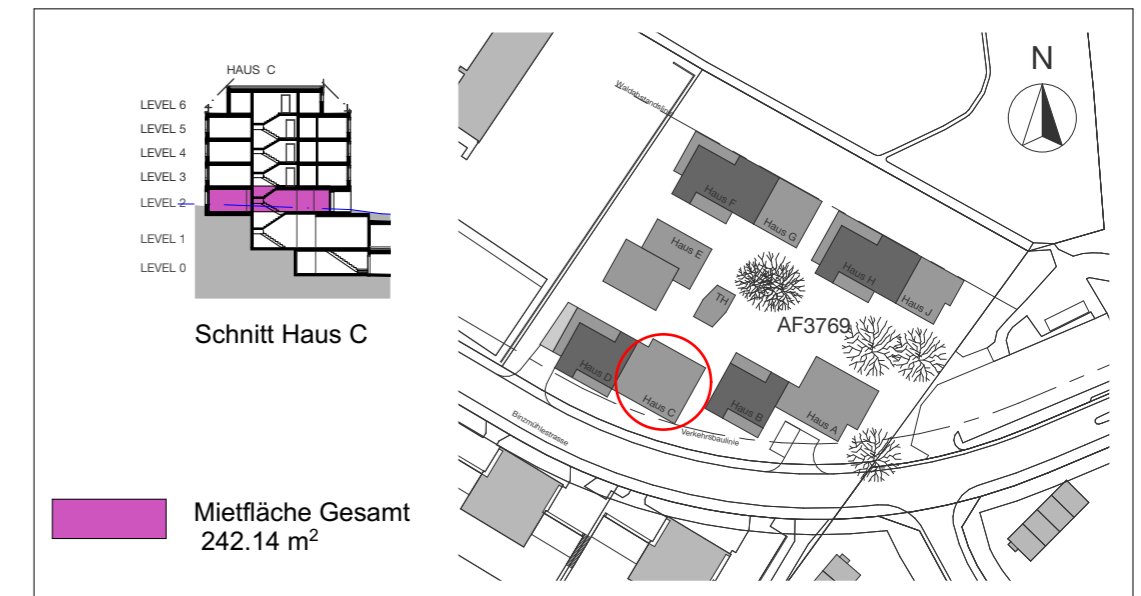


Grundriss  
Mst. 1:100

Plan Mst. 1:100  
1cm = 1 Meter

	Gemeinsam genutzte Nasszellen (Nutzung gelb / rosa)	
	Bruttomietfläche + (1/2 Nasszelle)	: 70.7m <sup>2</sup> + 7.4m <sup>2</sup>
	Nettomietfläche + (1/2 Nasszelle)	: 70.0m <sup>2</sup> + 7.0 m <sup>2</sup>
	Raumhöhe	: 2.56m
	Bruttomietfläche + (1/2 Nasszelle)	: 68.1m <sup>2</sup> + 7.4m <sup>2</sup>
	Nettomietfläche + (1/2 Nasszelle)	: 66.6m <sup>2</sup> + 7.0m <sup>2</sup>
	Raumhöhe	: 2.56m
	Bruttomietfläche	: 79.5m <sup>2</sup>
	Nettomietfläche	: 75.0m <sup>2</sup>
	Raumhöhe	: 2.56m



Situation  
Mst. 1:2000